

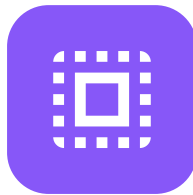
[PhonecheckFeatures](#)[Company](#)[Blog](#)[Request a Demo](#)

Phonecheck is a Complete Device Certification Solution



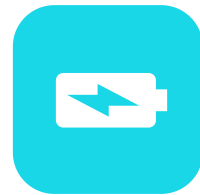
Lock Detection

Checks for manufacturer, carrier, & software locks.



Diagnostics

Automated component functionality scan.



Battery Health

Battery capacity check to receive and hold a charge.



Authenticity

Replacement part & background check



Cellular Service

Check SIM, place test call & sms message.

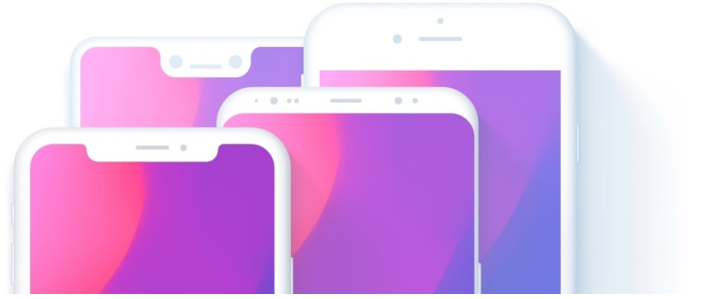


Erase & Reset

Secure data wipe and reset to factory default.

Compatibility

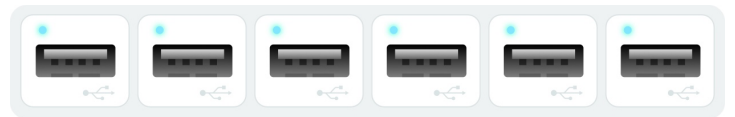
MAC / PC / iOS / Android



The Phonecheck App runs natively on any Mac, or Windows PC.

Phonecheck can scan any Apple, or Android Device produced in the last 10 years. Our team is constantly developing updates for new devices as they are released.

Batch Processing & Automation



Phonecheck was designed with high volume wholesale, and aftermarket dealers in mind. Our clients regularly process hundreds, or thousands of phones a month. Using any USB hub you can easily process multiple devices simultaneously.

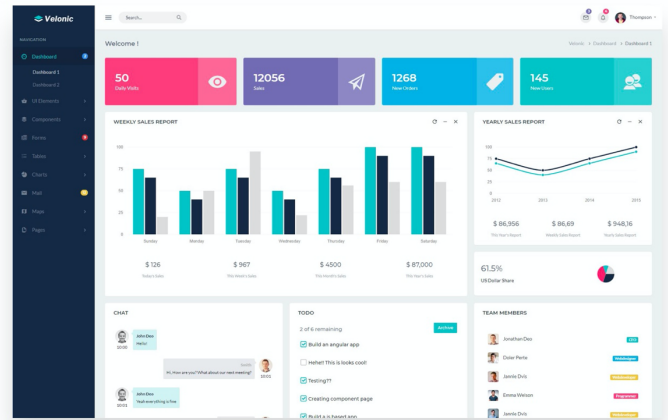
Data Erasure



Phonecheck Pro Version 1 has undergone product claims test by ADISA. ADISA sets the standard for data disposal services.

Cloud Enabled

The results for every device you scan are stored in your cloud account, which you can access through our easy-to-use dashboard



1-on-1 training & 24/7 support

Our team is here 24 hours a day to help you get started and support you along the way. Our average response time is under 2 minutes.

[Request a Demo](#)

Contact Sales:
7am-3pm PST mon-fri
(866) 399-3038

Complete Diagnostics

There are thousands of components in a modern smartphone or tablet.

Phonecheck's automated device

diagnostics scans the functionality, capacity and condition of all of them.

- Wifi Connectivity
- Bluetooth
- GPS / Location Services
- Charge & Headset Ports
- Battery Capacity
- Proximity & Light Sensors
- Vibrations
- Buttons & Switches
- Microphones & Speakers
- Front & Rear Camera
- Camera Flash
- Video Recorder
- Glass Condition
- LCD & Dead Pixels
- Digitizer
- Force Touch, 3d Touch
- Touch Id & Fingerprint Sensor
- Battery Capacity
- Face Id
- SPen
- Edge Screen
- Accelerometer
- Screen Rotation
- Network & Manufacturer Lock
- Activation and Reset Locks
- Jailbreak & Rooting Detection

Non OEM / Replacement Parts Detection

Non-OEM replacement components are the fastest growing problem in the secondary market. Phonecheck automatically scans every device for aftermarket Non OEM replacement parts and alerts you.

History & Authenticity



History & Authenticity

IMEI : 923857017390241



Phonecheck's history & Identity report gives you piece of mind.

Using the device's unique IMEI Phonecheck can confirm the device's authenticity. We also make sure the device has not been reported lost or stolen and that it's operating has not been hacked or jailbroken.

Increase Resale Value

Phonecheck is the most trusted name in device certification.

Phonecheck Certified Devices sell faster, and for more money. Our easy to print labels integrate with any inventory system, and unique certification reports are generated for every device you scan.

We also have made it easy to embed

Phonecheck reports on your website as well as online listings like eBay.



Phonecheck
Certified



Phonecheck

[Features](#) [Company](#) [Pricing](#) [Blog](#) [Testimonials](#) [Digital Assets](#) [Request a demo](#)

[Data Collection](#) [Data Erasure](#) [Device Certification](#) [Diagnostics](#) [Lock Detection](#) [Premium IMEI Checks](#)

Email us or contact us via Whatsapp at (818) 699-1965

Copyright © 2020 Phonecheck, LLC.

PATENT PENDING